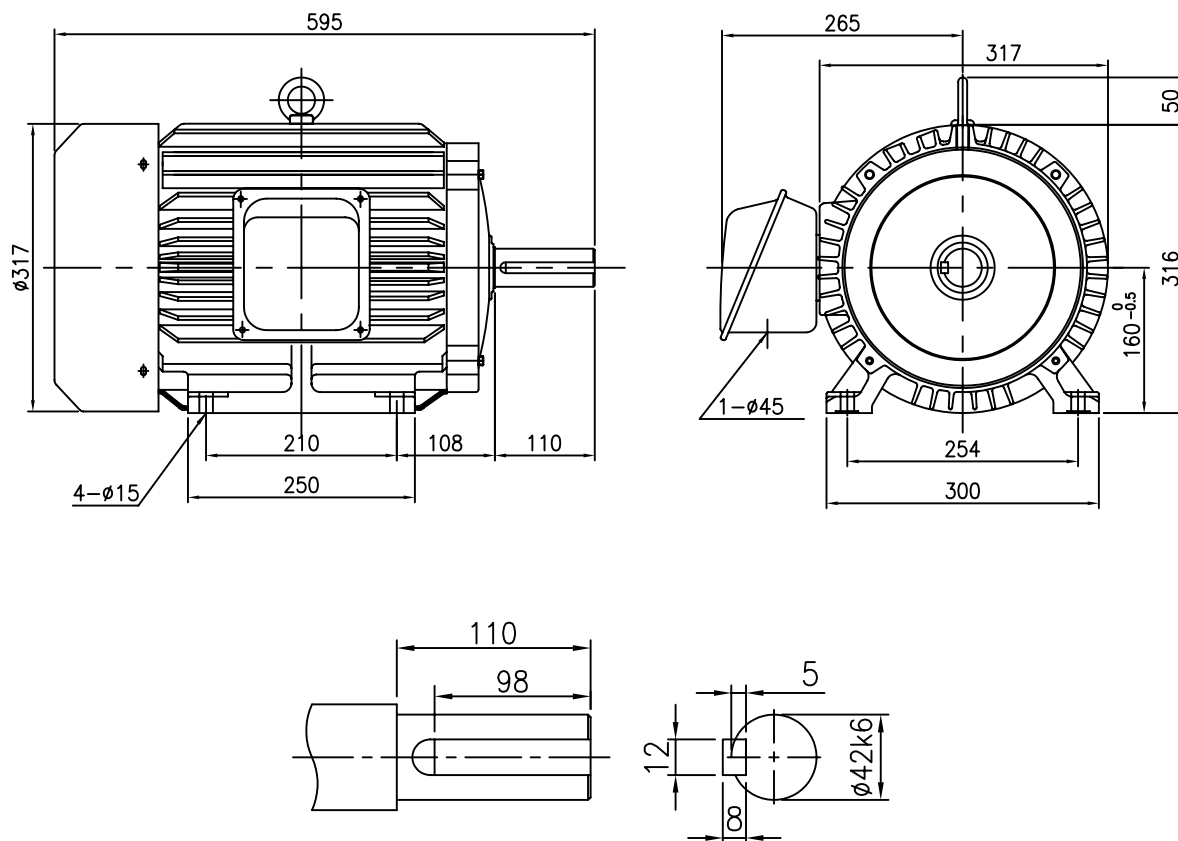


OUTLINE DIMENSION



SHAFT EXTENSION

<NOTE>

1. TYPE : TEFC(Totally Enclosed Fan Cooled)
FOOT MOUNTED TYPE
2. THE TOLERANCE FOR THE KEY DIMENSIONS
IS IN ACCORDANCE WITH KS B 1311-84
3. THE TERMINAL BOX MAY BE ROTATED
STEPS OF 90°

4. CAST IRON FRAME AND END BRACKETS.
5. STAINLESS STEEL NAME PLATE WITH
CONNECTION DIAGRAM.
6. STEEL FAN COVER AND TERMINAL BOX.

FRAME NO.	OUTPUT (kW)				INS. CLASS	PRO-TEC-TION	RA-TING	BEARING NO.						APPROX WEIGHT (kg)		
								2 P		4 P		6P / 8P				
	2P	4P	6P	8P				DRIVE	OPP.D.	DRIVE	OPP.D.	DRIVE	OPP.D.	2P	4P	6P/8P
160M	-	-	7.5	-	F	IP44	CONT.	-	-	-	-	6309ZZ	6307ZZ	-	-	105

UNIT	mm	SCALE	$\frac{N}{S}$	PROJECT'N	3rd Angle	TITLE	OUTLINE
DESIGNED		CHECKED		APPROVED			
2008.09.24 Y.D.WON		2008.09.24 K.I.HA		2008.09.24 H.T.KIM		SUBJECT	160M, B3
HIGEN Motor Co., Ltd.						DWG. NO.	DW-KMI-10HR8