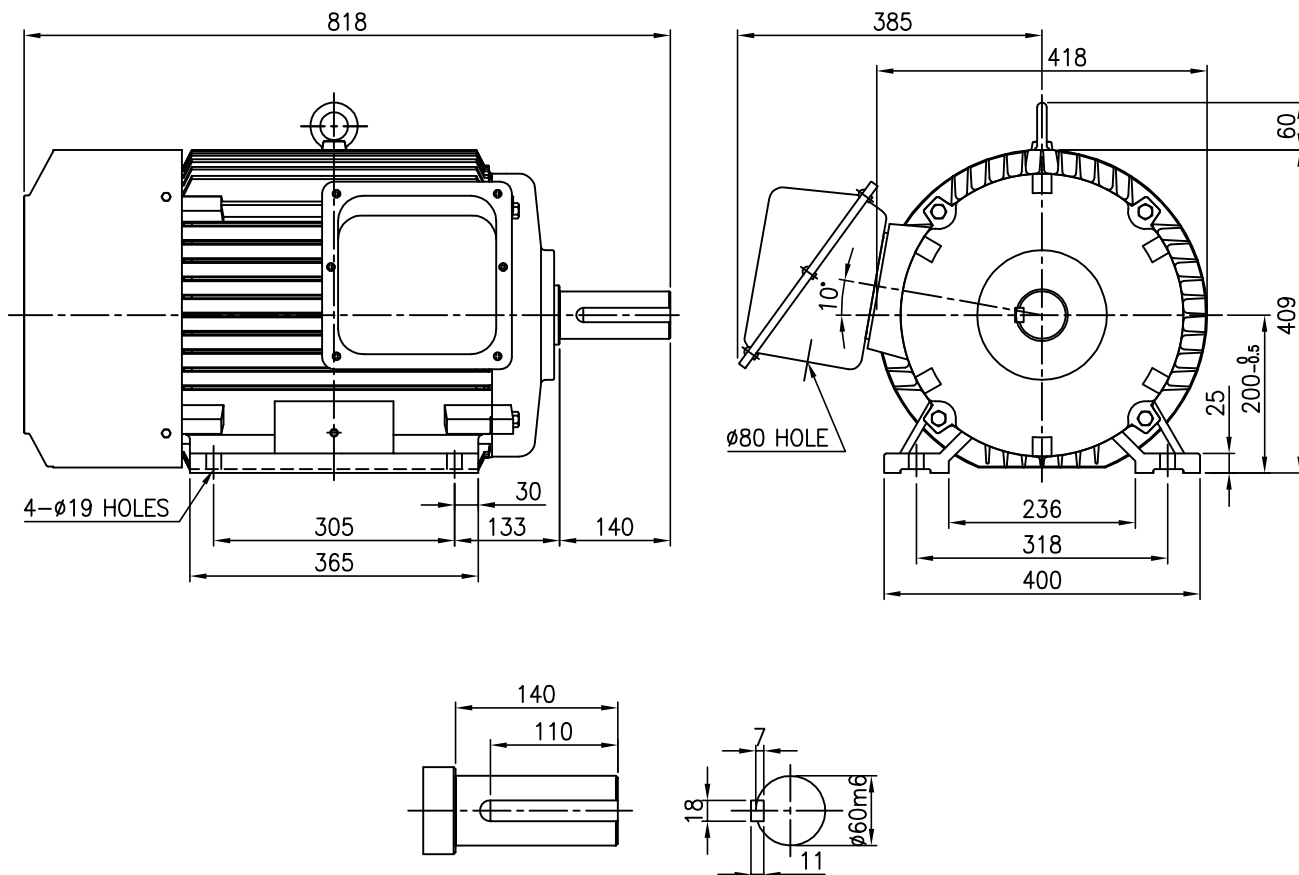


OUTLINE DIMENSION



SHAFT EXTENSION

<NOTE>

1. TYPE : TEFC(Totally Enclosed Fan Cooled)
FOOT MOUNTED TYPE
2. THE TOLERANCE FOR THE KEY DIMENSIONS
IS IN ACCORDANCE WITH KS B 1311-84
3. THE TERMINAL BOX MAY BE ROTATED
STEPS OF 90°

4. CAST IRON FRAME AND END BRACKETS.
5. STAINLESS STEEL NAME PLATE WITH
CONNECTION DIAGRAM.
6. STEEL FAN COVER AND TERMINAL BOX.
7. HIGH EFFICIENCY MOTOR.

FRAME NO.	OUTPUT (kW)	POLE (P)	Hz	VOLTS (V)	INS. CLASS	PROTECTION	SERVICE FACTOR	RATING	BEARING NO.		APPROX WEIGHT (Kg)
									DRIVE	OPP.D.	
200L	30	6	60	380	F	IP55	1.15	CONT.	6313ZZC3	6212ZZC3	335

UNIT	mm	SCALE	$\frac{N}{S}$	PROJECT'N	3rd Angle	TITLE	OUTLINE
DESIGNED		CHECKED		APPROVED			
2015.06.23 J.H.KIM		2015.06.23 S.S.YUN		2015.06.23 T.I.PARK		SUBJECT	200L, B3
HIGEN Motor Co., Ltd.						DWG. NO.	DW-KMH-40HU8