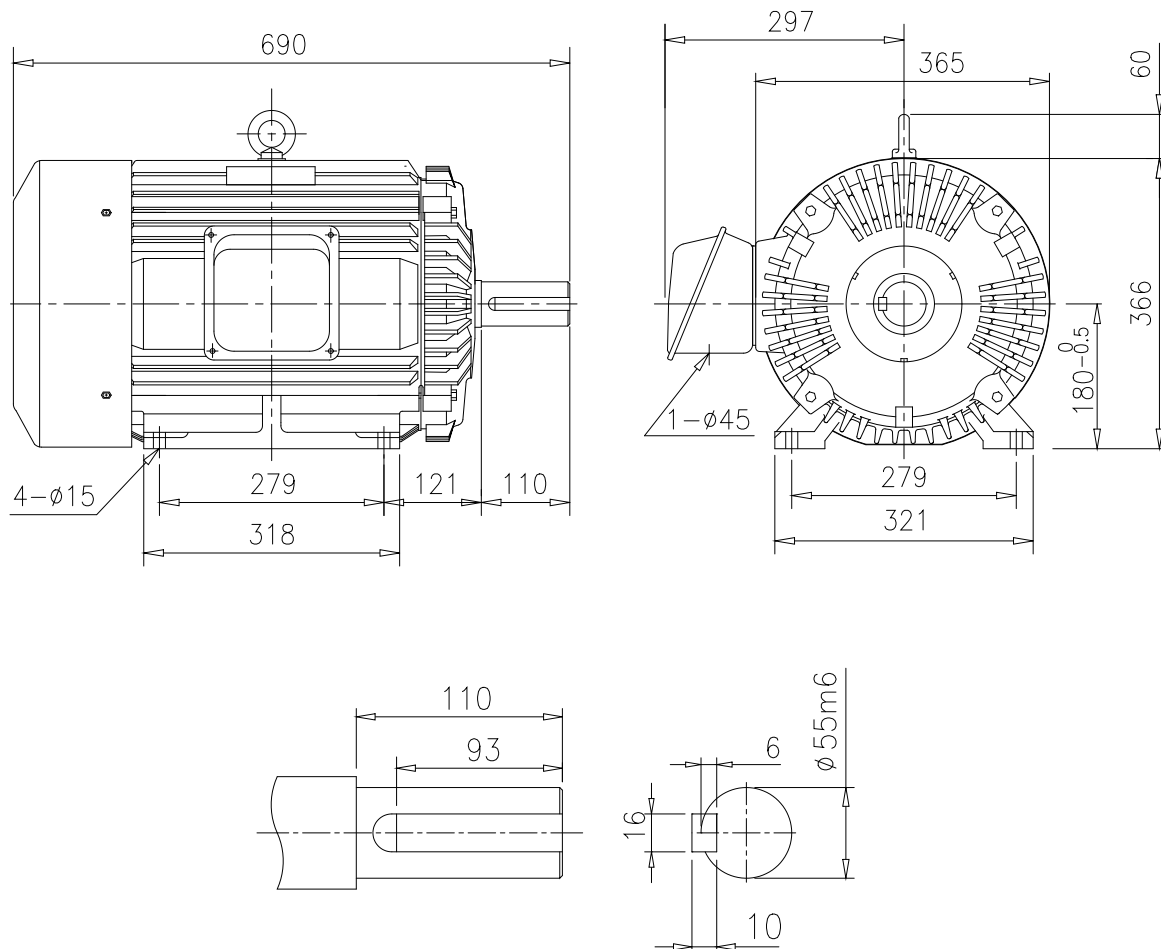


OUTLINE DIMENSION



SHAFT EXTENSION

<NOTE>

1. TYPE : TEFC(Totally Enclosed Fan Cooled)
FOOT MOUNTED TYPE
2. THE TOLERANCE FOR THE KEY DIMENSIONS
IS IN ACCORDANCE WITH KS B 1311-84
3. THE TERMINAL BOX MAY BE ROTATED
STEPS OF 90° IN ACCORDANCE WITH KS B 1311-84

4. CAST IRON FRAME AND END BRACKETS.
5. STAINLESS STEEL NAME PLATE WITH
CONNECTION DIAGRAM.
6. STEEL FAN COVER AND TERMINAL BOX.

FRAME NO.	OUTPUT (kW)	POLE (P)	Hz	VOLTS (V)	INS. CLASS	PROTECTION	RATING	BEARING NO.		APPROX. WEIGHT (Kg)
								DRIVE	OPP.D.	
180L	30	4	60	480	F	IP44	CONT.	6312ZZ	6309ZZ	210

UNIT	mm	SCALE	N/S	PROJECT'N	3rd Angle	TITLE	OUTLINE
DESIGNED		CHECKED		APPROVED			
2008.11.17 S.M. KIM		2008.11.17 S.S. YUN		2008.11.17 H.T. KIM		SUBJECT	180L, B3
HIGEN Motor co., Ltd.						DWG. NO.	KMI-40HZ1