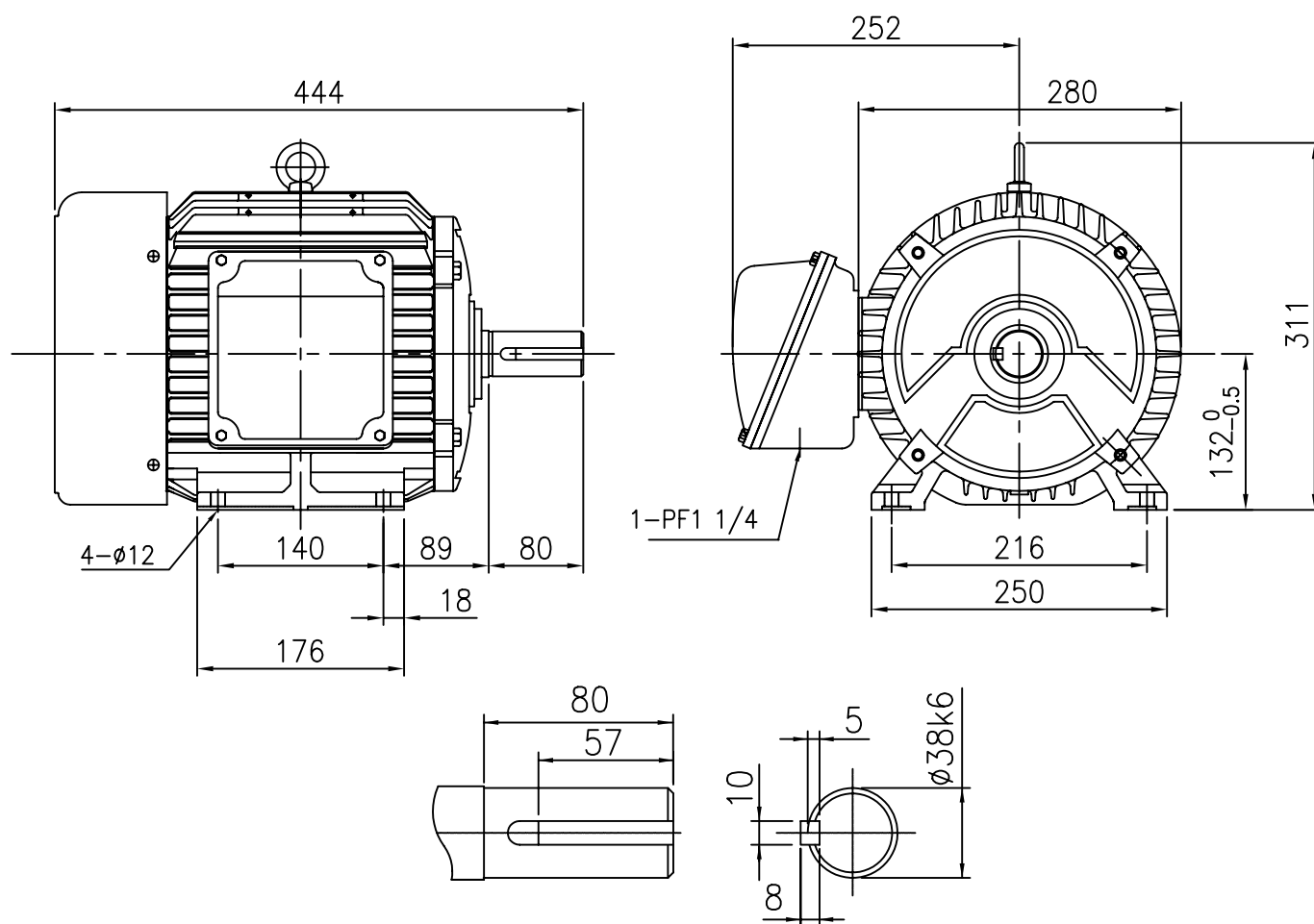


OUTLINE DIMENSION



SHAFT EXTENSION

<NOTE>

- 1. TYPE : TEFC(Totally Enclosed Fan Cooled)**
FOOT MOUNTED TYPE

- 2. THE TOLERANCE FOR THE KEY DIMENSIONS**
IS IN ACCORDANCE WITH KS B 1311-84

- ### 3. THE TERMINAL BOX MAY BE ROTATED STEPS OF 90°

- #### 4. CAST IRON FRAME AND END BRACKETS.

- ### 5. STAINLESS STEEL NAME PLATE WITH CONNECTION DIAGRAM.

- ## 6. STEEL FAN COVER AND CAST IRON TERMINAL BOX.

FRAME NO.	OUTPUT (kW)			BEARING NO.					
				2 P		4 P		6 P	
	2P	4P	6P	DRIVE	OPP.D.	DRIVE	OPP.D.	DRIVE	OPP.D.
132S	5.5/7.5	5.5	—	6208ZZ	6206ZZ	6208ZZ	6206ZZ	—	—

UNIT	mm	SCALE	$\frac{N}{S}$	PROJECT'N	3rd Angle	TITLE	OUTLINE
DESIGNED		CHECKED		APPROVED			
2009.01.30 H. Y. KIM		2009.01.30 J. H. JO		2009.01.30 H. J. KIM		SUBJECT	132S, B3
HIGEN Motor co., Ltd.						DWG. NO.	DW-132S-EFF